

MICH. STATE LIBRARY

Library of Michigan JUL 30 1974

HEAR YE!



Town Crier

Volume 15, Number 1

HISTORICAL SOCIETY OF GREATER LANSING

September, 1972

P.O. Box 515, Lansing, Michigan 48903

Summer 1972 was marked by the creation of special commissions and activities across the land devoted to the country's 200th Anniversary in 1976.

NEW MEMBERSHIP YEAR BEGINS

COME, COME, COME

September 20, 1972

7:30 p.m.
Lansing Public Library
Gallery Rooms



A concept for a nationwide network of Bicentennial Parks, built on land donated by the Federal Government, was approved by the American Revolution Bicentennial Commission last February. The number of public members of ARBC was increased to twenty-five appointees representing a cross section of age, ethnic, vocational and regional interests. One of two new women Commissioners announced in May was Judith L. Kooker of Beaverton, Michigan, a 24 year old Ph.D. candidate at the Johns Hopkins University School of Advanced International Studies.

The first official Bicentennial Philatelic Numismatic Combination (PNC), featuring the National Medal and Stamp series was issued on from Williamsburg on July 4th.

A proposal to name Detroit and Michigan the nation's Transportation Center '76 was made to the national commission. This theme was accepted by the Michigan commission which held its initial meeting in Lansing, August, 1972.

Lansing's Bicentennial Commission chaired by Claude Erickson has been directed by the city council to submit the proposal of Lansing's Bicentennial Park. Studies of the economic implications of the park on the city, region and state, and ways to make the park self-sustaining are authorized. Many express the hope that the park designed to "unite the man made environment of architecture with the natural environment embodied in the Grand River site" can integrate the state's history into its contemporary life.

The "kick-off" meeting of the Historical Society of Greater Lansing will feature a program on three phases of railroading for the hobbist.

The first phase, "Prototypical Railroading," will consist of a slide show and display by members of the MSU Railroad Club of the Project #1225. The #1225 is an exPere Marquette, Berkshire Type, steam locomotive, built in 1941 by the Lima Locomotive Works, Lima, Ohio. The #1225 and its' sister locomotives regularly hauled heavy freight and passenger trains between Detroit and Grand Rapids, and Grand Rapids and Chicago on the P.M. Division of the Chesapeake and Ohio Railroad. Among items on display will be the locomotive's whistle, headlight and number boards as well as a pictorial album on the progress being made by the MSU group.

The second phase of the program will deal with the "Model Railroader." The Lansing Area Model Railroad Club, under the direction of Herman Bushnell of Lansing will provide an operating model display geared to Michigan railroading, and information regarding the model fan.

Thirdly we welcome the "Toy Train Collector". This segment will include a display of toy trains from the collection of Richard Baibak (better known as "Railroad Rick") who has one of the largest collections of toy trains in this state. His display will include Lionel and Ives train sets and items dating from pre-World War II. Mr. Baibak is a member of "TTOS" (Toy Train Operating Society) and the "TCA" (Train Collectors Association), and is proprietor of the Meridian Models Hobby Shop in East Lansing.

Members and guests are encouraged to bring railroad items for display.

Financial Statement

July 31, 1972

Receipts

balance on hand July 1971	\$102.12
auction (less \$50.40 dolls)	256.25
State Society dues	75.00
local membership dues	231.00
gifts	25.00
dinners	\$ 451.30
	\$1,141.55

Expenses

A & E Printing	216.98
auction (dolls)	50.40
stamps	89.00
dinners	459.40
P.O. box rent	14.40
favours	30.00
refund	7.20
bank charges	2.30
miscellaneous	2.00
state dues	78.00
	\$949.68

\$1,141.55
- 949.68

191.87 June 30, 1972 balance

Adjustments since June 30, 1972

auction proceeds	164.45
memberships	9.00
balance	\$350.92

The TOWN CRIER is prepared for your enjoyment. Let us know your special interests, hobbies and news of projects. Write TOWN CRIER, P.O. Box 515, Lansing, Michigan 48903.



HISTORICAL SOCIETY OF GREATER LANSING

Please check type of membership requested. Make check or money order payable to the Historical Society of Greater Lansing. Direct to: P.O. Box 515, Lansing, Michigan 48903.

NAME

ADDRESS

ZIP

TELEPHONE

Regular	\$ 3.00
Associate	9.00
Patron	10.00
Oran. & Bus	
25 -	100.00
Life	100.00

*Dues received after March 15 apply through the next calendar year. Note change in cost of membership in association with Historical Society of Michigan.

AUCTION NETS FUNDS FOR SOCIETY

Near rain and cool air could not dampen spirits as the crowd gathered for the annual picnic and auction sale at Wiskemann's farm last June 24.

The mission lamp swung from a limb of the buck-eye tree, frost covered beverages filled copper boilers, coffee steamed in cups, and the "jewelry wagon" gradually filled with items for the auction.

The workshop and garage were converted to accommodate tables and plank seats for members and their guests, delicious food covered the workbench and the picnic fun ran riot.

Our auctioneers, Crosby, Wanger and Ceasar, of past auctions were joined by Buck Burns to bring the top dollar for all items.

Did anyone hear what Lucy Mary Kellogg did with her bale of hay?

NEW OFFICERS FOR 1972

George F. Wiskemann, President; Jane I. Piatt, Vice President; Mary McNeely, Secretary-Treasurer. Virginia Summers, Charles A. "Chip" Rogers, Jr., Edwin Brown and Jack T. Crosby, Sr., are trustees to serve two years. Continuing officers include Helen Curry, Pauline Stenson, Rajee Tobia and Roland Remington.

COMMITTEE APPOINTMENTS ANNOUNCED

The continuance and prosperity of this society is due to the quality of leadership and service individuals and committees have given. We are again fortunate to have the following members at work for us: Membership - Jack T. Crosby, Sr. and Jerry D. Roe; Program - Jane I. Piatt; Hospitality - Pauline Stenson; Publicity & Newsletter - Geneva Wiskemann; Bicentennial - Edwin T. Brown, chairman and Chip Rogers, deputy.

SOCIETY RECEIVES GIFT

C. Rowland Stebbins, Lansing realtor and member of the Society, has given the records of Lansing area real estate offerings he accumulated C1920-1972. The gift was announced by the president at the August 9 meeting of the executive board.

Recognition of their value to scholarly research projects was witnessed within a few days of physical transfer of the files from the real estate office. A candidate for advanced degree from the University of Michigan is currently examining the records and gathering information for an inter-university study.

Grateful thanks are extended to Mr. Stebbins for his thoughtfulness in donating this unique record for preservation and use.

An informed board now weighs services and facilities of area historical centers prior to deposit for continued safe-keeping.

INVENTORY OF HISTORICAL RESOURCES INITIATED

The Historical Society of Michigan in co-operation with the Division of Michigan History, Department of State, will inventory our state's historical resources as part of our developing Bicentennial activities.

Frank C. Wilhelme, director, reports creation of study committees charged to inventory current activities and needs for future growth in five categories: historic sites and historical preservation, archives and manuscript collections, historical organizations, museums and publications.

Findings of the survey will serve as basic recommendations for Bicentennial projects.

More information about ways you can participate in this important project will be published in forthcoming months.

OFFICIAL STATE MARKER TO BE ERECTED IN DELTA IN SEPTEMBER.

September 16, 1972 at 2 p.m. is the time for dedication of an official historical marker commemorating the history of the Delta area. The news of the marker renewed interest in the exciting story of the Ingersoll family and others who pioneered the Delta-Watertown area in land development, education and religion. Residents and friends of history in Greater Lansing appreciate this evidence of growing concern for the preservation of our history in a community rich in natural and human resources.

This society will assist in mailing invitations to interested groups and individuals. All members are urged to attend the program and reception. Join in

step behind the Grand Ledge band. Let's make it a memorable day!

Esther W. Loughin

1905-1972

Thoughts of tribute and feelings of deep appreciation will long be expressed for Esther W. Loughin. Her death on March 31, 1972 halted a life of contribution to the cultural scene of Michigan.

Bookshelves are filled with printed sources, scholarly theses, periodicals and special tools which acknowledge her assistance or creation. Less tangible is the continuing effect of her positive philosophy of service and patient training of young workers.

This Society is proud to have enjoyed her membership.

Your executive board on May 31, 1972 approved a contribution to the Esther Loughin Memorial Book Fund established by the State Library where she served from 1941 to 1965. Contributions and gifts continue to be directed to the Michigan Section, State Library, 735 East Michigan Avenue, Lansing, Michigan 48913.

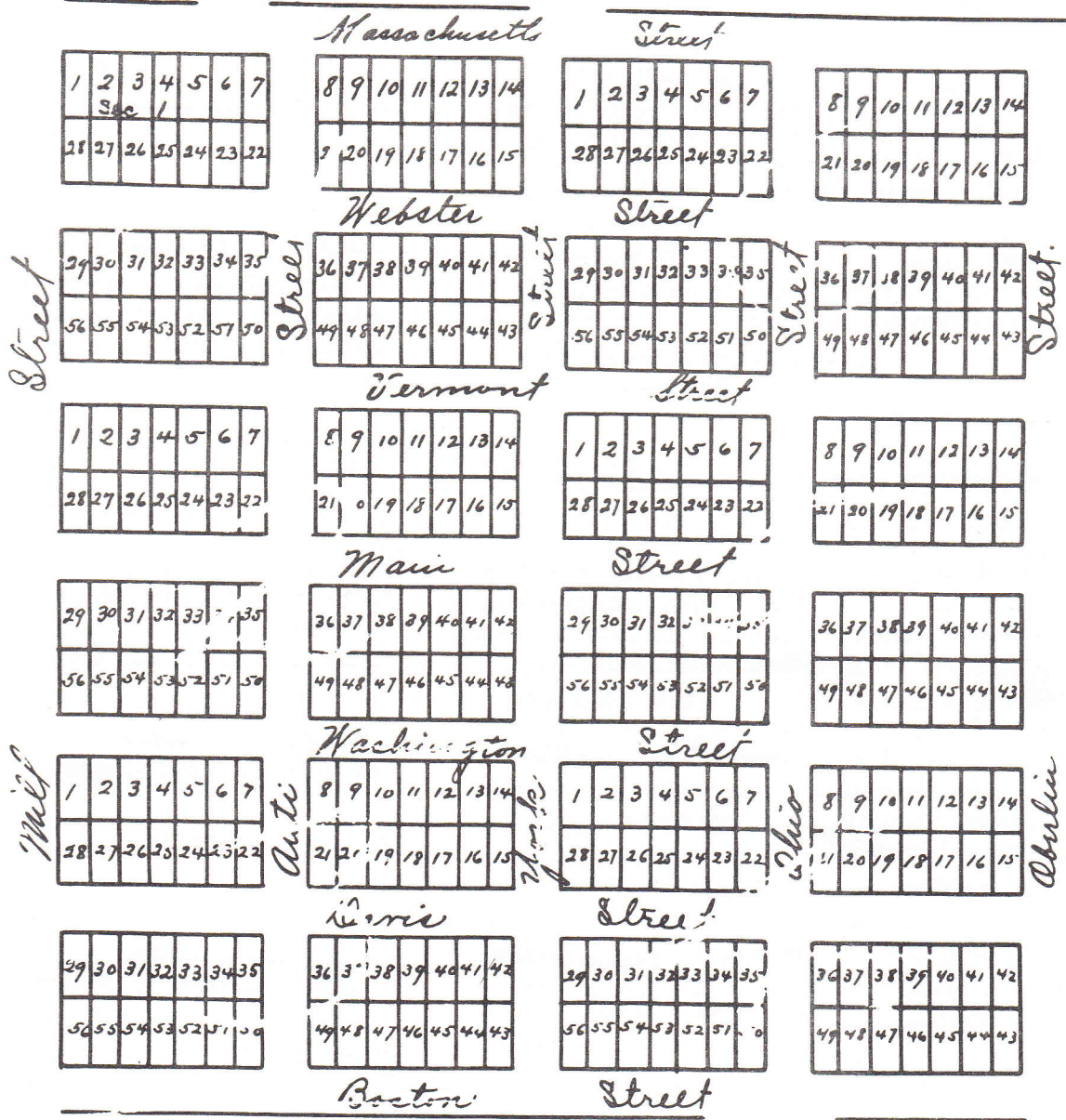
This poem is reprinted with permission from the tribute in *Michigan Heritage*, Summer, 1972.

ESTHER W. LOUGHIN

by Joseph Cherwinski
Written for *Michigan Heritage*

O lady with your golden smile
And wisdom in your heart,
We held your loving hand a while,
O lady with your golden smile!
The passing years cannot defile,
Nor wrench our thoughts apart,
O lady with your golden smile
And wisdom in your heart!

Dimensions of Lots Except the corner lots and those touching Main Street need 158 1/2 feet by 66
 Lots on Main St (except corner lots) 42 by 66 Corner Lots on Main St 142 by 82 1/2 All other Corner lots 158 1/2 by 82 1/2
 Main Street is 100 feet wide, all the other Streets are 66 feet.



34' diameter the center of Abulian Street
 Corner of Section 1903 on Town 4 North and Range 3 West and runs N 30° W
 Street 85° 15' West 22' distance from the corner part on the east
 Street

Var 3 1/2 E

I hereby certify that this Plat is a correct copy of the Plat now on Record in the Register of Deeds Office, being made under the supervision of the Auditor General by tracing the Plat on Record and affixing thereto a carefully compared copy of the Certificates
 Dated the 22nd day of April 1911
 Alton B. Sturd
 Clerk, Aud Gen Dept

At the corners and those touching Main Street used 158 1/2 feet by 66
 by 66 Corner Lots on Main St 142 by 82 1/2 All other Corners 158 1/2 by 82 1/2
 other streets are 66 feet.



Main Street commences at a Stake in the center of Mill Street
 which stands North 85° 15' West 22 chains from the center post on the East
 line of Section 1903 on Town 4 North and Range 3 West and runs N 33° 30' W
 34 chains to the center of Abulia Street

Car 3 1/2 E

copy of the Plat now on Record in the Register
 supervision of the Auditor General by tracing
 a carefully compared copy of the Certificates
 Dated the 22nd day of April 1911
 Alton B. Hurd
 Clerk, Aud Gen Dept

Signed and Sealed in presence

- E. S. Ingersoll [L.S.]
- O. B. Ingersoll [L.S.]
- D. S. Ingersoll [L.S.]
- Eliel Ingersoll [L.S.]
- Alexander Ingersoll [L.S.]

State of Michigan }
 County of Eaton } On this Eleventh day of June
 before me one of the Justices of the Peace for said
 D. S. Ingersoll, Eliel Ingersoll, O. B. Ingersoll, & Alexander
 to be the persons who executed this instrument
 Daniel R. Carpenter

Registers Office }
 Eaton County } ss. I certify
 Was received
 of June 1899
 and entered by me accordingly W. J.

PLAT OF GRAND RIVER CITY

Signed and sealed in presence of

E. S. Ingersoll [L.S.]

O. B. Ingersoll [L.S.]

D. S. Ingersoll [L.S.]

Eliel Ingersoll [L.S.]

Alexander Ingersoll [L.S.]

State of Michigan }
County of Eaton } On this Eleventh day of June 1841 personally appeared
before me one of the Justices of the Peace for said County E. S. Ingersoll
D. S. Ingersoll, Eliel Ingersoll, O. B. Ingersoll, & Alexander Ingersoll known to me
to be the persons who executed this instrument
Daniel R. Carpenter Justice of the Peace

Registers Office }
Eaton County }^{35.} I certify that the above Plat
was received for record this 11th
of June 1841 at 2 O'clock P. M.
and entered by me accordingly
W^m Stoddard Reg
Frederick F. White
Deputy

PLAT OF GRAND RIVER CITY

1/2
Main Street commences at a Stake in the center of Mill Street
which stands North 85° 15' West 32 chains from the center point on the East
corner of Section 193 on Town 4 North and Range 3 West and runs N 83° 30' W

quarter
acing
ies

JOHN MUNRO LONGYEAR

by Ernest H. Rankin

It would be a strange town which wouldn't be proud of a native son who left the home hearth to make a lasting name for himself in another city. While the past disappears into obscurity and the succeeding generations lose sight of it, some names do prevail into posterity.

Among the prominent residents of Lansing in its pioneer days was Judge John Wesley Longyear, a Michigan jurist of distinction, serving two terms in Congress, and later appointed Judge of the United States Court at Detroit.

His name has long since disappeared in the annals of Lansing history. His younger son, Howard William, became a prominent physician, serving for some years as a consulting surgeon at Harper Hospital in Detroit. His name, as well as his father's has been lost in obscurity. However, the name of the older son, John Munro Longyear, prevails today in a Michigan city just four hundred miles from his birthplace.

John Munro Longyear was born in Lansing on April 15, 1850, and it was here he received his elementary education. At the age of thirteen he entered Olivet College and later attended Georgetown University, Washington, D.C. During the residency of the family there, while his father was serving in Congress, young John spent much time in hospitals writing letters and reading to wounded Civil War soldiers. Later he attended Cazanovia Seminary in New York State, and read law in his father's office.

Failing health caused him to seek an out-door life and at the age of twenty-two he entered into the service of the State of Michigan as a landlooker working in Cheboygan County.

In 1873 he moved to Marquette and for five years was engaged as a timber cruiser and landlooker. In 1878 he was appointed agent for the Keweenaw Canal Company and on January 4, 1879, married Mary H. Beecher, a Grand Rapids school teacher.

They first lived in a very modest home on North Front Street. Its location is now in Marquette's business area. Here their first child, Abby Beecher, was born March 20, 1880. Shortly afterwards they moved farther up Front Street hill, occupying a large house located on the present site of the Peter White Public Library. Here their first son, Howard Munro, was born in 1882. He was followed by John Beecher, who died in youth, and two more girls, Helen McGraw (Helen Longyear Paul), born January 20, 1885, and Judith Folger, born April 26, 1886.

John Munro, Jr., was the last to be born in Marquette. Robert Dudley was born in Paris, France in the early 1900's and remains the last to carry on the family name.

As the Longyear family increased in size, so did their homes, his wealth, and his interest in the history of the Upper Peninsula of Michigan. In the early 1880's the family moved from the Front Street house to a 16-room dwelling on Cedar Street, and doubled its size by adding 16 more rooms at the back. The big dining room, as well as the master bedroom above, had large plate glass windows affording an unobstructed view of Lake Superior, less than a quarter-mile distant. Adjacent to the dining room was the library, three of its four walls lined with bookcases extending from floor to ceiling, the shelves filled to capacity with an ever-growing collection of historical works.

During Longyear's five years in the Upper Peninsula woods he had studied geology and forestry. He invested his earnings in valuable mineral and timber lands. His wealth, for he had been shrewd in his operations, pyramided into a fortune and by the late 1880's he was rated as a multi-millionaire.

Spacious and beautiful as the Cedar Street home was, it was not enough. He acquired a whole city block south of his house, and here he built a mansion of Lake Superior red sandstone, said to contain 64 rooms. It was located on the brow of the cliff, 75 feet above the lake and nearly every window afforded a view of a portion of the inland sea. Privacy was assured by thick shrubbery, stone walls and a high, spiked iron fence which surrounded the formal grounds. They loved the great lake spread out before them and its grandeur, in calm or storm, held them fascinated. They were a happy devoted family, friendly to all.

Howard, the eldest son, developed into a very likeable young man and acceptable to all. One of his devoted friends, about his age, was Hugh Allen, son of a local railroad auditor. They had enjoyed many camping trips together, paddling in Howard's canoe to favorite spots along the lake shore. There was nothing unusual in the Saturday morning early in July, 1900, when they loaded their duffle into the canoe and headed for the Huron Mountain Club some 40 miles up the lake. Both families were members of this exclusive organization.

On that same day - midafternoon - a couple taking a stroll on Presque Isle found Howard's canoe, the paddles and other effects washed ashore on Black

Rocks at the northern end of the peninsula. A rough sea had been running and there was no doubt about it, there had been a tragedy! They hastened as fast as possible over the three miles back to Marquette to inform the authorities and by nightfall the whole city was saddened, for both the lads were held in high esteem.

Search parties were immediately organized and during the following days the boulder-strewn bottom of the clear waters of the lake were scanned by scores of searchers in small boats hoping to find the bodies. The cheerless task required a dozen days.

Immediately after of the funeral of Howard Longyear the family with bag and baggage, departed for Paris, France, where they were to reside for the next several years. Mrs. Longyear vowed that she would never again live in the house where almost every window revealed a view of the lake which had taken her son.

Mr. Longyear's extensive landholdings and investments required he spend much time in the Upper Peninsula. He and Mrs. Longyear decided to raze the Marquette house and re-erect it in Brookline, Massachusetts. This would lessen Mr. Longyear's travelling time and be advantageous to his wife. She was a devoted, dedicated member and worker in the Christian Science Church, and as its headquarters were in Boston, she would be better able to serve this organization.

Stone by stone the Marquette mansion was razed. Each stone was numbered, wrapped in burlap for protection, and it has been stated that 76 railroad flatcars were required for the shipment to Brookline.

The house was not large enough and the mansion was enlarged considerably upon its re-erection. Upon her death in 1931 it was willed to the Church and there it stands today on Fisher Hill. It is known as the Longyear Foundation and is dedicated to the use of this church.

Mrs. Longyear appreciated the value of her husband's historical collection and after his death in 1922 she provided it with every protection. Encouraged by her daughter, Helen Longyear (Mrs. Carroll) Paul, she willed the collection to the Marquette County Historical Society. Mr. Longyear had been the first president of this society when it was organized in 1918. She provided funds for a fireproof building with vaults as well as space for a museum.

Today, the John M. Longyear Research Library remains as a lasting memorial to the man who appreciated the rich history of the Upper Great Lakes region. It is without parallel in its collection of local history and is in constant use by students of all ages.

Many writers describe John Munro Longyear as a heartless "timber baron." Others record that he served his chosen community and the entire state in many ways. His philanthropies, as well as those of his family, were substantial. The people of Lansing can well be proud of this native son who went but a short distance into the world and left a lasting name to the Wolverine State.

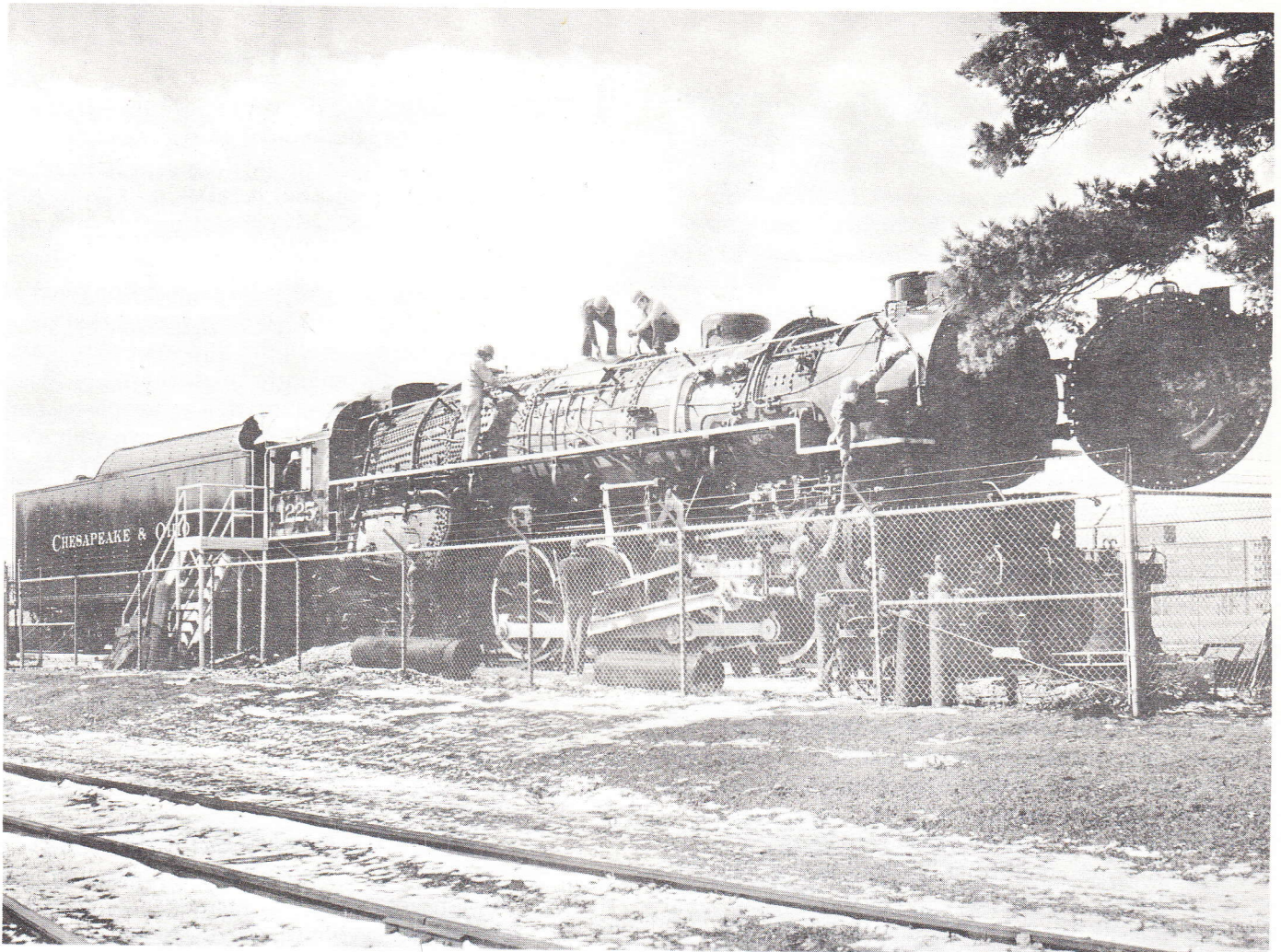
Ernest H. Rankin, former resident of Marquette and executive of the Marquette County Historical Society, now resides in Cheyenne, Wyoming.

TRUCK HISTORY ORGANIZED

"Knowledge of and pride in history of accomplishment of an industry have a great deal to do with the morale of people in the industry, and their ability to attract able, young new employees. It also is true, those who do not know the history of errors of the past are condemned to repeat them, and maybe equally true, those who know of the successes of the past are helped in extending those successes"

This quotation is from the invitation to membership distributed by the U. S. Truck Historical Society. The Society was founded to provide the trucking industry and those fields of interest related to trucking with a central "collecting point" for artifacts, photographs, drawings and general information pertaining to the early years and the development of highway freight transportation in America.

Membership is open to any person and/or firm or other organization interested in the trucking industry in America. Contact the Society, Room 320, 15 Spinning Wheel Road, Hinsdale, Illinois, 60521.



Courtesy C.A. Rogers & Sons Collection

Michigan State University Railroad Club members at work on steam locomotive #1225. This view shot early in 1972 depicts a typical Saturday "work day" at the locomotive site on campus. Individuals are Club members and associate members who volunteer time and energy to the project.

To give you some idea of the effort involved in a project of this nature please note that the jacketing and lagging have been removed from the locomotive boiler, the sand dome, pop valves (safety valves), whistle, headlight and marker lights. The tanks on the ground along the fence are air receivers and the object on the ground in front of the locomotive that resembles a smoke stack is the petticoat pipe from inside the smoke box. The smoke box door is open for inspection and servicing. All this activity points to the seriousness of the effort put forth by this unusual organization to eventually restore and operate the 1225.

Spotted near the 1225 is a Grand Trunk Western Railway Post Office Car which is used by the MSU group as an office and tool shed.

The locomotive and the post office car are open to the public on weekends with tours and knowledgeable explanations by club members. The organization may be contacted through its president, Kevin Keefe, in care of the MSU museum, East Lansing.

MSU ADMIN. SECT.

SEP 5 - 1972

RECEIVED

The Charter Township of Delta
cordially invites you to attend
THE DELTA MILLS HISTORICAL MARKER DEDICATION

Delta Mills Township Park
Old River Trail West of the Webster
Street Bridge

Saturday, September 16, 2:00 p.m.
Reception: Delta Township Admin-
istration Building 3:00 p.m.

Motorcade of Antique Cars starting from the front entrance of Lansing Mall 1:30 p.m.

In case of rain: Ceremonies will take place at Delta Township Administration Building

DELTA MILLS

Erastus S. Ingersoll settled here in 1836 and constructed a water-powered sawmill. A gristmill was added, and in 1840 a resident wrote that people came from twenty miles around to have their flour made. A school modeled after Oberlin College was chartered as "Grand River Theological Seminary", but never opened. Platted as Grand River City in 1841, the village was commonly called Delta Mills after the township and main industry. The mills operated into the twentieth century.

Michigan Historical Commission Registered Local Site

*Property of the State of Michigan
1972*

Acknowledgements and thanks to: Richard Neller (Donation of the Marker)
Historical Society of Greater Lansing
Genealogical Society of Mid-Michigan
People who have made Historical Displays possible
Drivers and Owners of the Antique Cars

P R O G R A M

Master of Ceremonies: Eric Berry, Secretary,
Delta Township Planning Commission

Invocation: Rev. Raymond J. McBratnie, Delta Mills Methodist Church

Pledge of Allegiance: Trinity United Methodist Church, Troop #304

National Anthem: Grand Ledge High School Band

Welcome: J. M. Hoffman, Vice-Chairman, Delta Parks & Recreation Commission

Presentation of Congressman Garry Brown: Representative Dale Warner

Introduction of Old Timers: Roland (Ron) Warfield, Chairman, Delta Parks
& Recreation Commission

Delta's Past: Dr. Martha Bigelow, Director, Michigan History Division,
Michigan Department of State

Delta Forward: Colonel Joe Parisi, President, Michigan Township Association

Dedication of the Historical Marker: Mr. Jerry Rowe, Member, Michigan
Historical Commission

Unveiling: Congressman Garry Brown

Acceptance of Marker: Theodore L. Early, Supervisor, Charter Township of Delta